



Wayside Charger for Stationary Installations

ATS Part # A300493

Stationary Battery Charger

The ATS Wayside Battery Charger system is designed to be used as a fast battery charger for any battery powered vehicle that is equipped to interface with the charger and can accept 500 - 800VDC at 600A full load DC.

Features

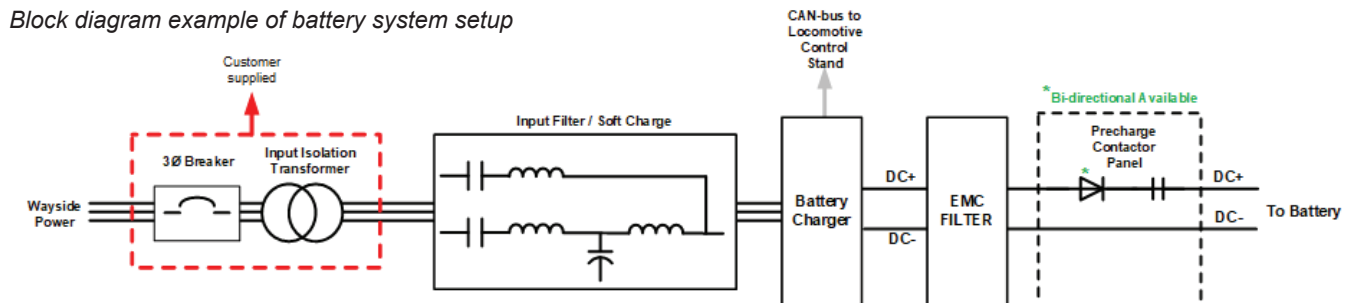
- 3 phase AC input to DC output
- Weather proof enclosure (NEMA3 and IP54) for indoor or outdoor installation
- Input voltage 480VAC standard
- Other input voltages will require custom transformers
- Constant current/ constant voltage output
- CAN-bus interface
- Automatic or manual operation. Programmable operation per application.
- Available in 400kW and 800kW outputs (800kW output will require additional sections)

Hardware Description

- Breaker connects the grid power to the battery charging system.
- Input isolation transformer converts the grid supply voltage to an appropriate input voltage for the charging system.
- Input filter/soft charge circuit is applied to each phase before going to battery charger.
- Battery charger is a drive module that converts AC voltage to DC output that then charges batteries. Its control algorithm regulates the output current and output voltage to programmable limits that may vary when CAN control is selected.
- EMC filter suppresses electrical noise from the charger to the batteries.
- Precharge contactor panel controls the inrush current to/from the batteries during system initialization.

Applications

- Rail
- Bus
- Marine
- Mining
- Electric Vehicles



Specifications		425kW		850kW	
	Input	Output	Input	Output	
Rated Power @Rated Volts	400kW @ 480V AC	400kW @ 800V DC	800kW @ 480V AC	800kW @800V DC	
Frequency range	58-60 Hz	DC	58-60 Hz	DC	
Voltage Range	451-590V @ 100% Tap (480VAC - 12kVAC_	600 to 800V DC	451-509V @ 100% Tap	600 to 800V DC	
Amps @ Rated Power	500A @ 100% Tap	500A (600A peak)	500A @ 100% Tap	1000A (1200A peak)	
Ambient Operating Temperature Range	-40°C to +60°C (-40°F to 140°F)				
Relative Humidity	Up to 100% with occasional condensation. Enclosure has heater to minimize condensation.				
Altitude	1829 m - derate above 914 m (6000 ft. - derate above 3000 ft)				

Typical Enclosure Dimensions	
Height	226cm (89")
Width	353cm (139")
Depth	117cm (46")
Weight (approximate)	3629kg (8000 lbs)
Min recommended pad size	152cm x 356cm (60" x 140")
Concrete pad rating	Min. 8000 lbs



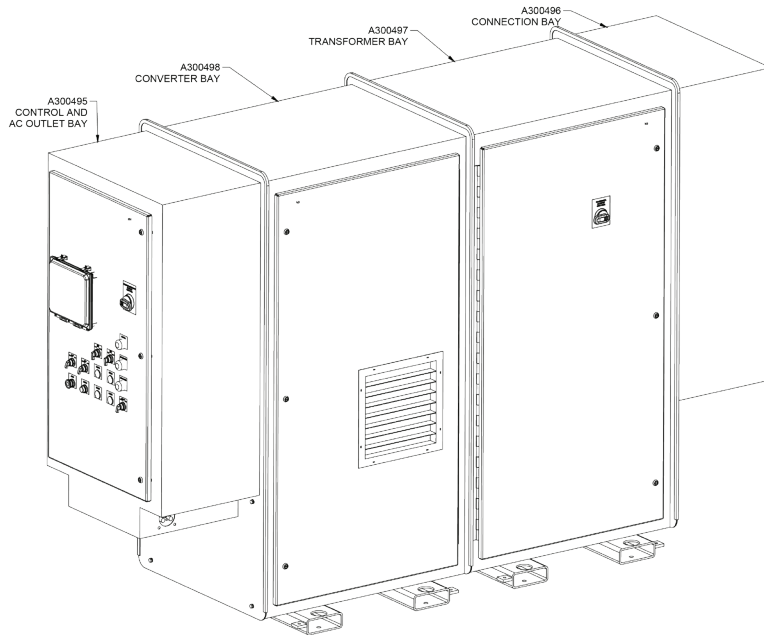
American Traction Systems Inc.
www.americantraction.com

© 2024 American Traction Systems Inc. All rights reserved.
Wayside-Chargers_ATSb_2024.1

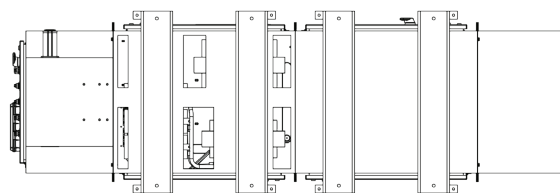
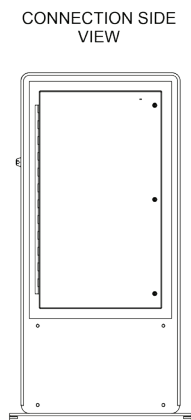
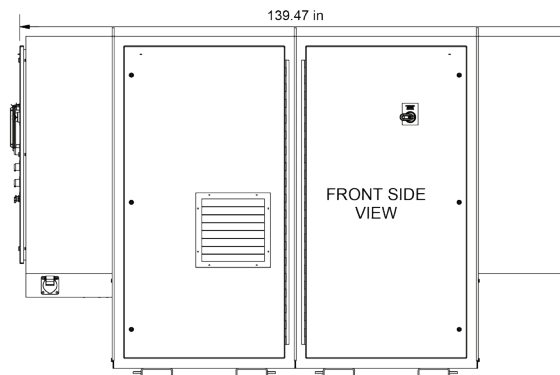
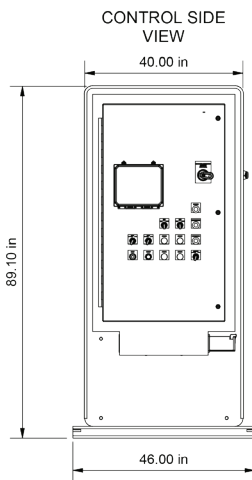
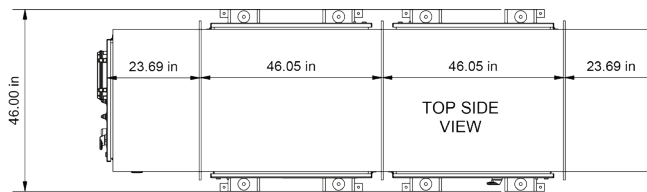
239.768.0757
10076 Bavaria Road
Fort Myers, FL 33913 USA

Electric Propulsion Controls and Accessories

Dimensional drawings of required enclosure with section breakdowns



On-site installation and pantograph mounting



BOTTOM SIDE VIEW